

## 42 Forest Road Trevallyn TAS

5 🛏 3 🚿 2 🚗

It is with good reason that Afton Brae, has had only 2 owners over its 135 year history. The property represents an opportunity to acquire a residence rich in architectural detail, aesthetic and streetscape value. Beautifully restored, refurbished and landscaped, the home now offers a relaxed and elegant lifestyle. It is a truly wonderful family home.

Afton Brae was originally built in 1890 by the Robertson family, who selected Trevallyn -affectionately known as the Captain's suburb - for its remarkable elevated outlook across Launceston and the Tamar River, hence its name. The area's growing appeal amongst professionals at the time made it an ideal location for their family home. The Robertsons cherished Afton Brae for three generations. In

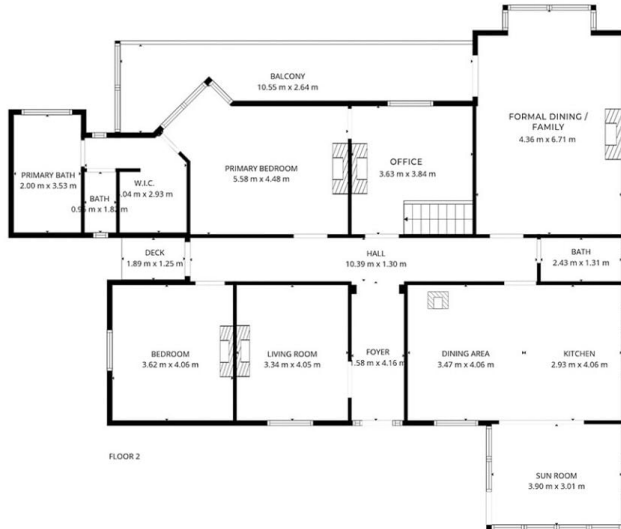
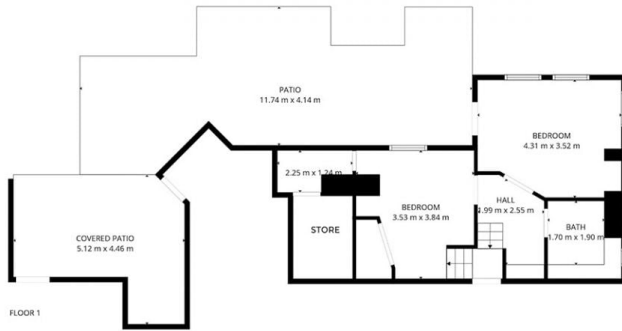
**Type** : House  
**Building Size** : 225 sqm  
**Land Size** : 1203 sqm  
**View** : <https://www.historicproperty.com.au/8537921>



**Dominic Romeo**  
0438 500 277

[For full version visit the website](https://www.historicproperty.com.au)

# 42 FOREST ROAD TREVALLYN



FLOOR AREA 225 m<sup>2</sup>