



### 364 Jeffreys Road Corop VIC

3 2 1

Corop, in the Goulburn Valley region of Northern Victoria is known for its fertile grey loams, rich red Cambrian soils, and its diverse and beautiful landscape.

This is the ideal we are all looking for, with that perfect country house. A sense of calm overcomes you the moment you arrive at Corop Farmhouse. Cherished as a family home for generations, the homestead embodies both architectural heritage and timeless charm. It is truly the family country house we all dream about, or that peaceful weekend country escape.

The 187m<sup>2</sup> (approx.) residence is entered via a deep verandah which wraps around three sides of the house. The wide entry hallway leads to the master bedroom and 2

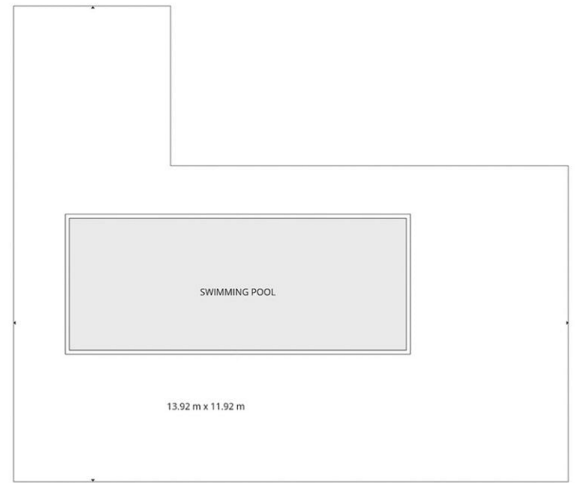
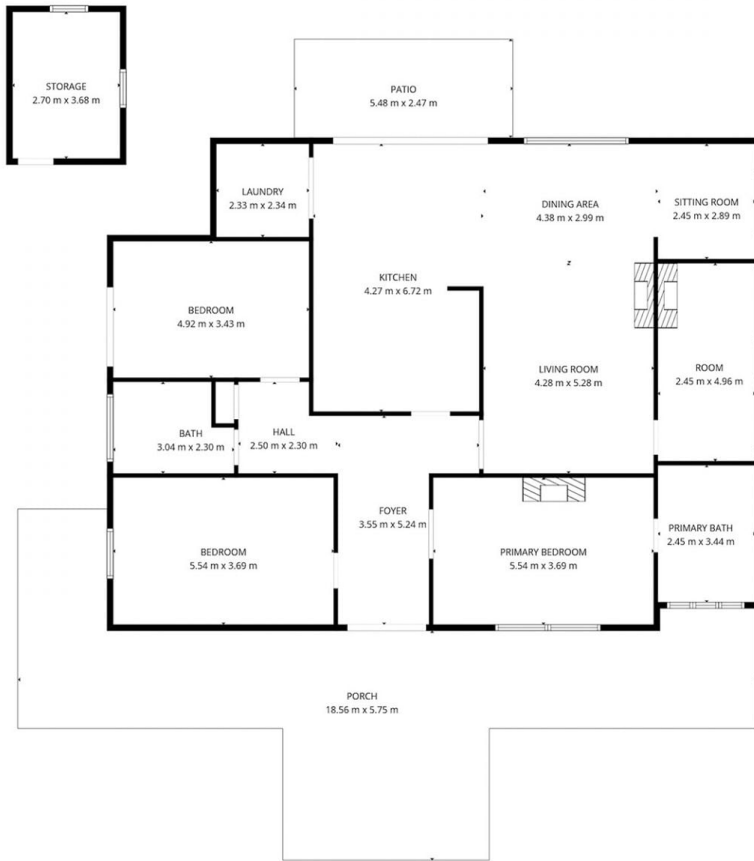
[For full version visit the website](https://www.historicproperty.com.au/8515341)

**Type** : House  
**Building Size** : 187 sqm  
**Land Size** : 7875 sqm  
**View** : <https://www.historicproperty.com.au/8515341>



**Dominic Romeo**  
0438 500 277

# 364 Jeffreys Road, Corop



**FLOOR AREA 187 m<sup>2</sup>**  
**Porch 71 m<sup>2</sup>**

