



11 Stoke Street New Town TAS

6 2 2

Mayfield is without a doubt one of Hobart's most unique examples of Gothic architecture. Built in the English tradition, the conjoined triple storey brick rendered Victorian building is straight out of an English fairytale. Architecturally, and historically important, Mayfield is believed to be the work of Alexander Dawson, who was responsible for designing some of Tasmania's and Australia's finest gothic buildings. Mayfield retains all the classical hallmarks of the grand early Victorian Gothic vernacular including steeply pitched roof, finials, gables, decorative parapets, arched windows and doorways. These were all features designed to make an impact, impress and make a lasting statement. Mayfield is now on the market for the first time in 40 years.

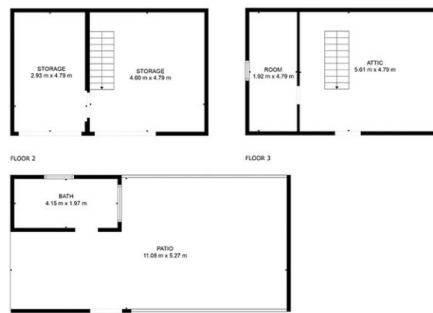
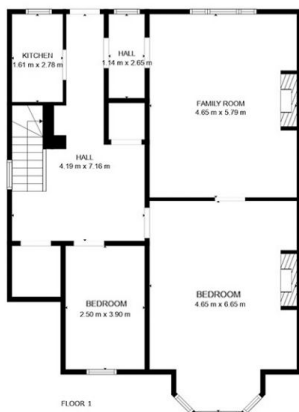
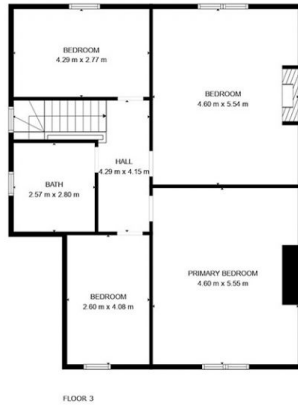
Type : House
Land Size : 1161 sqm
View : <https://www.historicproperty.com.au/8452829>



Dominic Romeo
0438 500 277

[For full version visit the website](https://www.historicproperty.com.au)

11 Stoke Street, Newtown Hobart



House Area 312m²
Barn 130 m²

Every attempt has been made to ensure the accuracy of the plan contained here. Measurements are approximate, and no responsibility is taken for any error, omission, or misstatement. This plan is for illustrative purposes only.

