

379 Brighton Road Pontville TAS

4 2

Georgian houses in Tasmania are highly sought after for their beautiful symmetrical design, but also, as part of our love affair to own an early part of Australia's early colonial past and architectural history. Tasmania has the largest collection of intact colonial and Georgian houses in Australia and Stace House, built in 1840 is no exception. Originally built as the Dover Castle Inn, the property is currently a private residence and also well suited as a weekender, or accommodation venture.

Many of the Georgian buildings in Pontville were constructed from the late 1820's. Thomas Stace purchased two blocks of land in 1838 and had a substantial house built. In the 1840 Census, it is listed as partially completed and by 1842 it was in the possession of the owner, Thomas

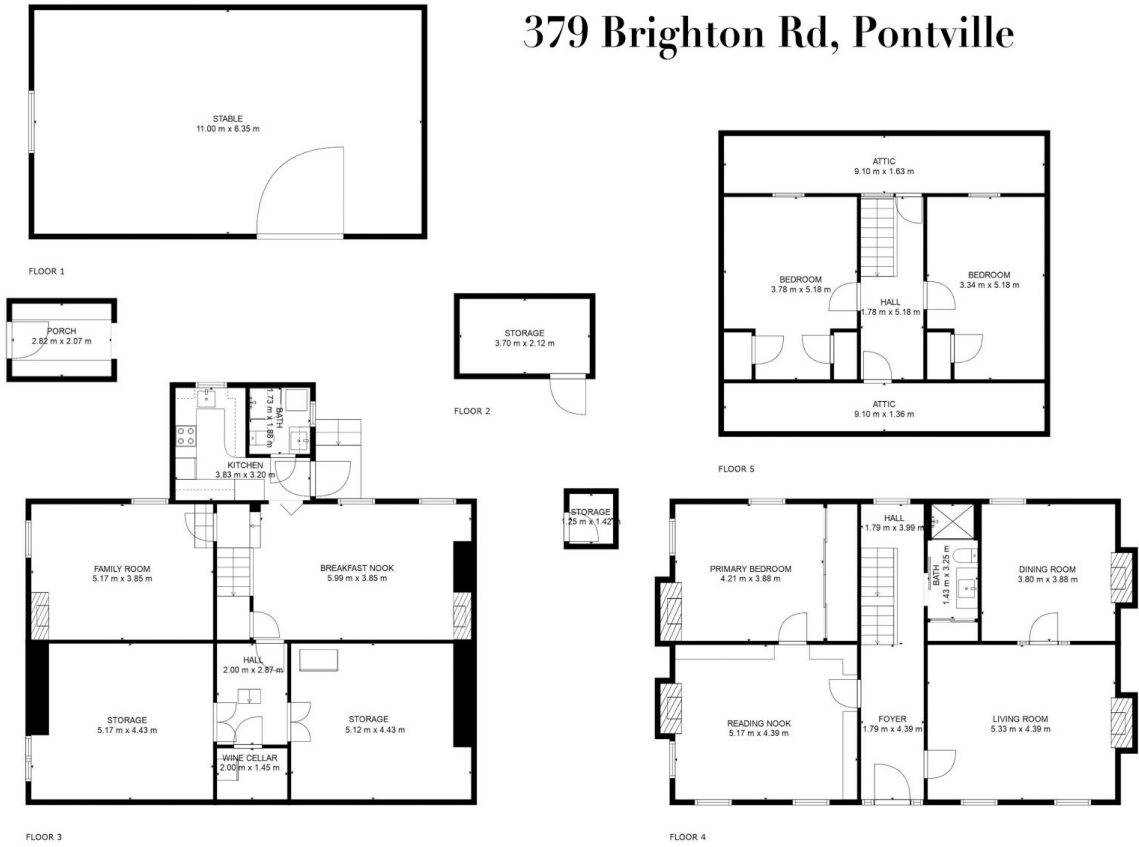
Type : House
Building Size : 224 sqm
Land Size : 6812 sqm
View : <https://www.historicproperty.com.au/8293771>



Dominic Romeo
0438 500 277

[For full version visit the website](https://www.historicproperty.com.au)

379 Brighton Rd, Pontville



Total Floor Area : 224 m²